

STELAPOP

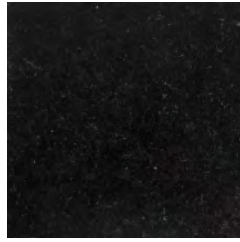
RECYCLED TEXTILE PANELS

Stelapop is a sustainable material made from 70% recycled textile fibers and 30% biobased binder. The upcycled solid panels are water and stain-resistant, lightweight, and durable, making them ideal for applications in furniture and interiors. With its recyclability and eco-friendly properties, Stelapop offers a stylish, sustainable alternative.

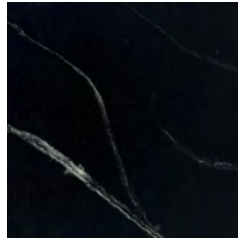
Content	Textile 70%, Biobased binder 30%
Thickness	5, 12 (mm)
Dimension	1200 x 2400 (mm)
Density	1100-1200 kg/m ³

Price	SKU	Finishes
	STL.0001	Jet Black
	STL.0002	Taurus Black
	STL.0003	Gold Night
	STL.0004	Silver Night
	STL.0005	Hubble
	STL.0006	Picasso
	STL.0007	White Sand
	STL.0008	Lagoon
	STL.0009	Sugar Candy
	STL.0010	Cloud
	STL.0011	B-Boy
	STL.0012	Gold Sand
	STL.0013	Sodalite
	STL.0014	Dusk Blue
	STL.0015	Blue Hulk
	STL.0016	Granite
	STL.0017	Tally Holly
	STL.0018	Cobalt
	STL.0019	Holiday
	STL.0020	Grey Fox
	STL.0021	Lunar

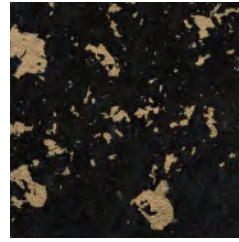
Patterns



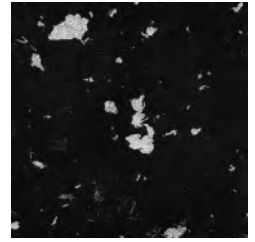
Jet Black



Taurus Black



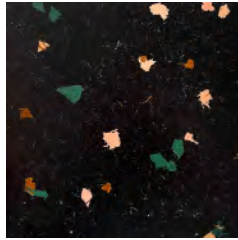
Gold Night



Silver Night



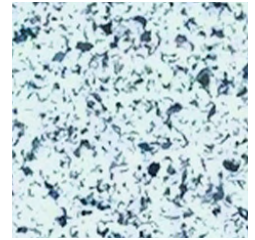
Hubble



Picasso



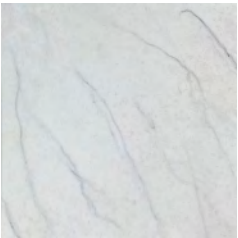
White Sand



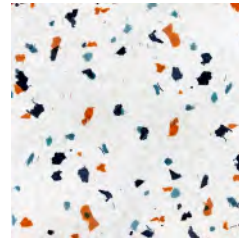
Lagoon



Sugar Candy



Cloud



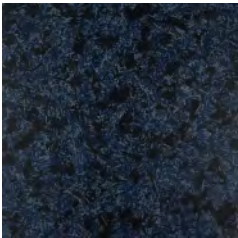
B-Boy



Gold Sand



Sodalite



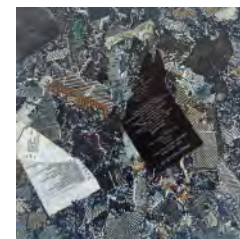
Dusk Blue



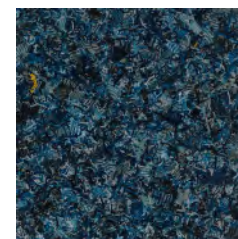
Blue Hulk



Granite



Tally Holly



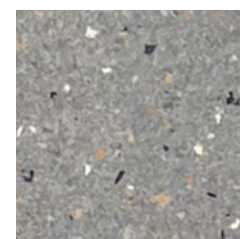
Cobalt



Holiday



Grey Fox



Lunar