

## Terrazzo wood chip panels

Surfaces Collection

Terrazzo wood chip panel is a sheet material composed of end-grain wood chips made from offcuts, wood dust, plaster waste, and 0% VOC bio-based resin. A durable and versatile material that can be adapted to suit each project, it is ideal for interior surfaces such as wall panels, tabletops, countertops, and flooring.

Thickness

24mm  
No-chip: 20mm

Dimensions

1220 × 2440 mm (wall)  
1200 × 780 mm (floor)

Characteristics



### Sustainable

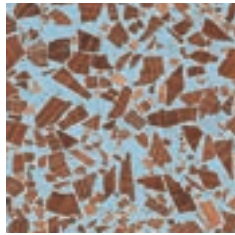
Surfaces contain a minimum of 65% waste stream content, with the average sheet storing 78kg of CO<sub>2</sub>.



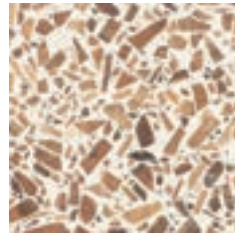
### Durable

High quality materials are used for longevity and toughness.

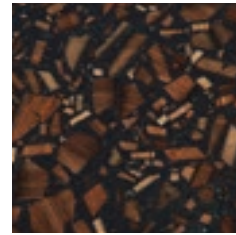
## Finishes



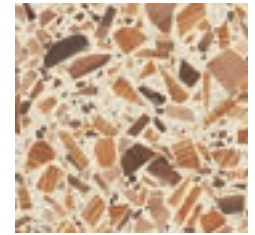
Azure Oak



Bianco London Plane



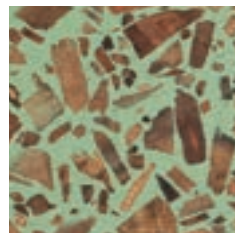
Charcoal Walnut



Ivory Duo



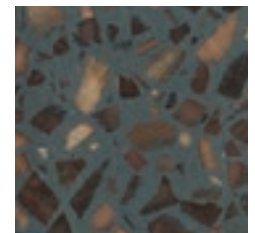
Pewter Oak



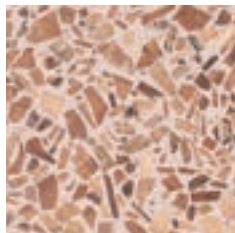
Sage London Plane



Chocolate Oak



Slate Walnut



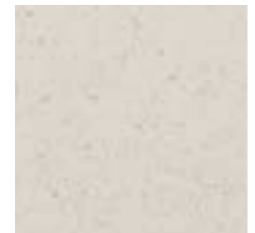
Blush London Plane



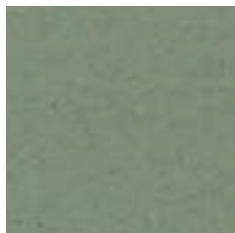
Ivory Oak



Azure no-chip



Pewter no-chip



Sage no-chip



Charcoal no-chip

## Technical Specifications

### Composition

Material	Origin	Notes
End-grain Wood Chips	UK	Made in-house from British timber waste
Wood dust/Planing Waste	UK	Sourced from SMEs in the UK
Mineral Powders	UK	50% sourced as waste
0% VOC Bio-based Epoxy Resin	France	34% Biological Content
Pigment	UK	98% Biological Content
Birch Plywood	UK	FSC & PEFC
Standard Hardwax Oil Finish	UK	Food-safe Natural Oil

### Compressive Strength

Properties	Unit	Result
Proportional Limit	MPa	10.31
Strain at Limit	%	2.17
Turning Point	MPa	13.10
Strain at Turning Point	%	2.45
Compression Modulus	MPa	892.46

### Flexural Strength

Properties	Unit	Result
Maximum Flexural Stress	MPa	77.06
Strain at Break	%	1.78
Flexural Modulus	MPa	5498.68

### Tolerances

Properties	Unit	Result
Thickness	mm	23.5 mm +/- 0.5 mm
	mm	No-chip: 20mm +/- 0.5mm
Length and Width (Sheets)	mm	Sheets are supplied with a "factory" edge which must be trimmed. Please allow 10mm on every edge.
Length and Width (Flooring/ CNC)	mm	+/- 1 mm

## Technical Specifications

### Fire rating

Properties	Report reference	Result
BS 476 Part 7 (1997)	Report ref WF438198	Class 2

### Slip rating

Properties	Unit	Result
Dry	BS 7976-2:2002 + A1:2013	Low Slip Potential (52 PTV average - R12)
Wet	BS 7976-2:2002 + A1:2013	Moderate Slip Potential (26 PTV average - R10)

### Finishes

Name	Standard	Description
Hardwax Oil	EN71-3: 2013	Food safe natural worktop oil with high resistance to scratching and staining.
High Traffic Furniture Lacquer	FIRA 6250:2005	Horizontal surfaces in Heavy/ Severe contract usage
High Traffic Floor Lacquer	2004/42/E	Medium to High traffic lacquer for wooden floors in commercial and insitutional environments
Anti-slip Floor Lacquer	2004/42/EC BS 7976-2	Reduces slip potential in bars, schools, shopping centres, and all other high traffic public areas
Fire Rated Lacquer	BS476 Part 6	Fire Propagation of Products Report Number: 315455
	BS476 Part 7	Surface Spread of Flame of Products Report Number: 315456
	EN13501-1	"Euro" Classification B-s1,d0 Report Number 333923
	FIRA 6250:2005	Horizontal surfaces in Heavy/ Severe contract usage