



Paper Factor Piano

Surfaces Collection

Paper Factor was created from the exceptional qualities of a solid surface material made from a new compound of micro-paper – an innovative evolution of papier-mâché. Scientifically tested and developed in collaboration with the University of Salento, all Paper Factor surfaces are hand-made.

The Piano collection is the most versatile and minimal of all Paper Factor surfaces with its smooth touch, expressing a subtle elegance. An excellent product to acquaint oneself to the brand, as well as introduce to an interior.

Available in square and rectangle formats.

Thickness

15 mm

Dimensions

kindly enquire with us

Characteristics



Non-toxic

Made with non-toxic materials of neutral PH, it is safe for interior applications.



Durable

Extremely strong and robust form.



Lightweight

Remarkably light, an 800 × 800 mm panel with a 10 mm thickness is approximately 2.5kg.



Sound Insulation

Noise transmissions are reduced within rooms for a quieter environment.

Finishes



Beige



White Natural



Light Grey



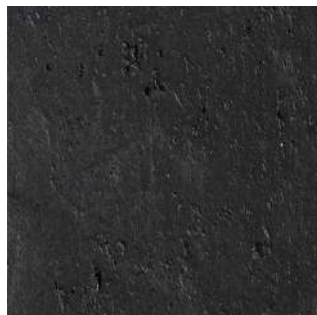
Concrete



Red



Yellow Mustard



Absolute Black



Dark Grey

Technical Specifications

Properties	Unit	Result
Flexural strength	MPa	3.36
Thermal conductivity	L	0.122
Thermal diffusivity	A	0.157
Breathability	M	8.7
Water-vapour permeability	D	2.231·10 ⁽⁻¹¹⁾
Density	R	117.28
Reaction to fire	-	Certification Pending
HACCP	-	Certification Pending
Resistance to mould and fungus	-	Unattackable by mould, parasites and funghi
Odour Emission	-	Absent