

Polygood

Surfaces Collection

Sourced from everyday post-consumer and industrial plastics—like appliances, packaging, and electronics—Polygood® panels showcase vivid, terrazzo-inspired patterns and marble-like finishes, offering a creative material solution that champions circular design.

Robust yet lightweight, these solid panels are water-resistant, easy to fabricate, and suitable for a wide range of interior, furniture, and architectural applications.

Content

100% Recycled Polystyrene

Thickness

12 / 19 (mm)

Dimensions

2800 x 1400 (mm)

Finishes

Matte, Satin, Gloss

Characteristics

Sustainable

Sustainable material made from 100% Recycled Polystyrene (rPS).



Water Resistant

Waterproof and rot-proof. Suitable for a wide range of interior, furniture, and architectural applications.



Scratch Resistant

Made from 100% recycled polystyrene (rPS), offering improved scratch resistance. Optional coatings can provide scratch or fire resistance.



Standard Finish

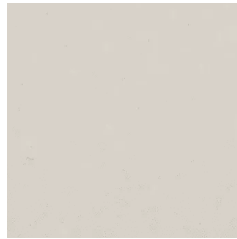
Standard finishes include semi-matte, single-faced. Finishes available on request include semi-gloss, high-gloss, and double-faced.



Certifications



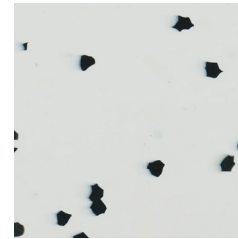
Patterns



1) Fleur de Sel
PS1905



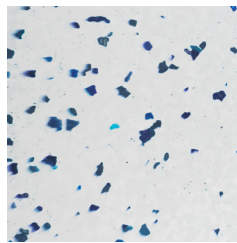
2) Fleur de Nuit
PS2009



3) Timeless Duo
PS1201



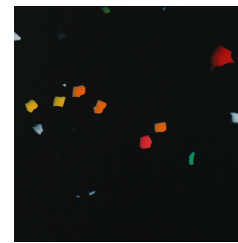
4) White Lollipop
PS1601



5) Timeless Duo Blue
PS1802



6) Reverse Timeless Duo
PS1202



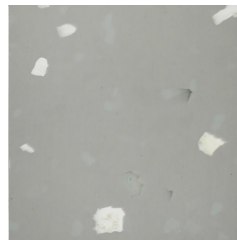
7) Black Lollipop
PS1602



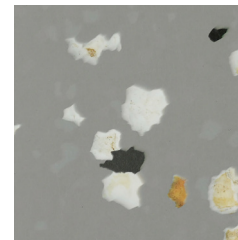
8) Pattern N°5
PS1203



9) Pattern N°3
PS1206



10) Greycious
PS1702



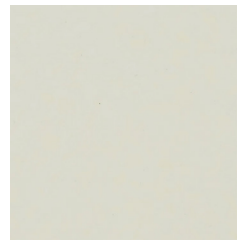
11) Marble Desert
PS2110



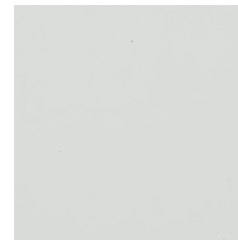
12) Victorious
PS1507



13) Terrazzo Nuovo
PS1901



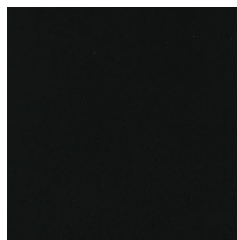
14) Vintage Pearl
PS1101



15) Milky Way
PS1104



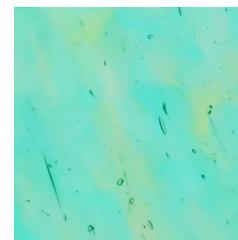
16) Pure Grey
PS1102



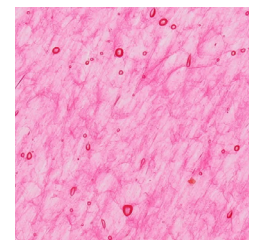
17) Dark Knight
PS1103



18) Cliff (Genster)
PS2602



19) Translucent Green
PS1303

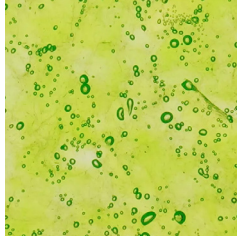


20) Translucent Pink
PS1304

PANELOGUE

Technical Datasheet

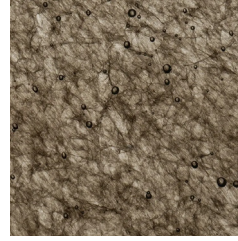
Patterns



21) Translucent Neon Green PS1306 ●



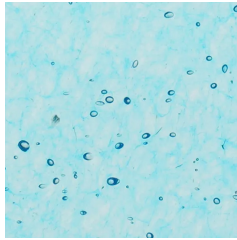
22) Translucent Orange PS1311 ●



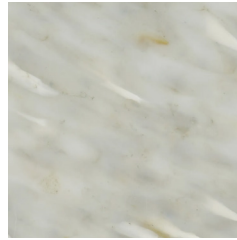
23) Translucent Black PS1309 ●



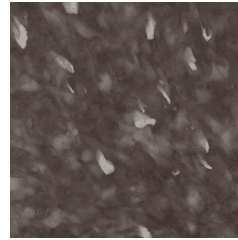
24) Translucent Clear PS1305 ●



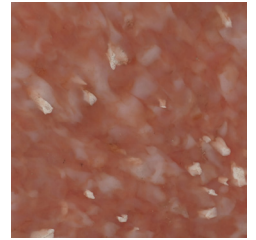
25) Maldives PS1301 ●



26) Salt Dune PS1701 ●



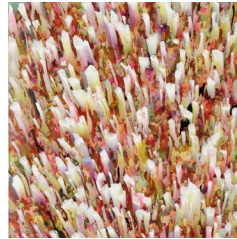
27) Espresso Noir PS2114 ●



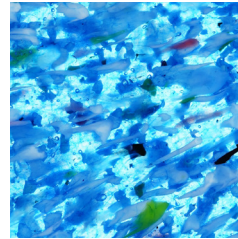
28) Salmon Terra PS2121 ●



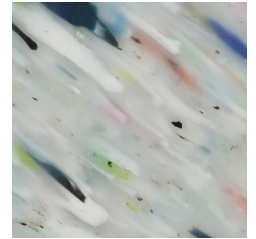
29) Ice Lollipop PS1503 ●



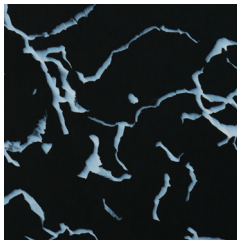
30) Pot Pourri PS1402 ●



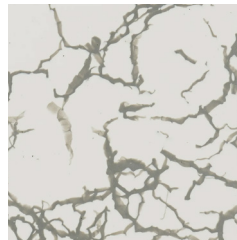
31) Aqua Drift PS1508 ●



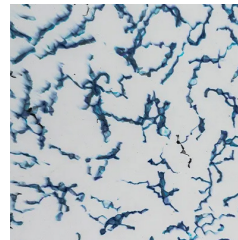
32) Glaze Sprinkles PS1604 ●



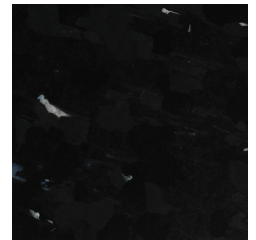
33) Sea Foam Dark PS2401 ●



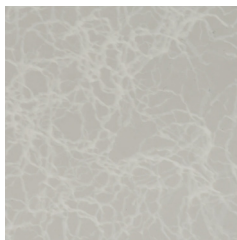
34) Sea Foam Grey PS2404 ●



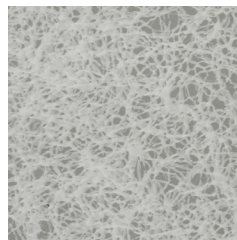
35) Sea Foam Blue PS2403 ●



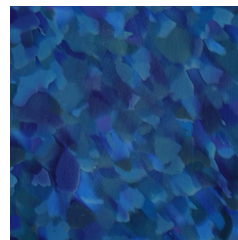
36) Midnight (Gensler) PS1707 ●



37) Gossamer (Gensler) PS2406 ●



38) Haze (Gensler) PS2407 ●



39) Sapphire Terrazzo PS1801 ●

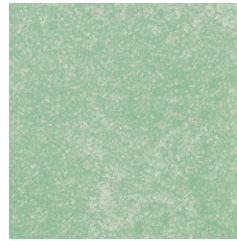


40) Emerald Ghost PS1706 ●

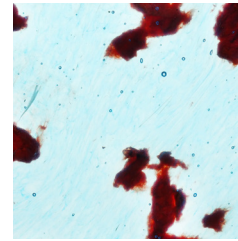
Patterns



41) Translucent Glitter Gold
PS2118



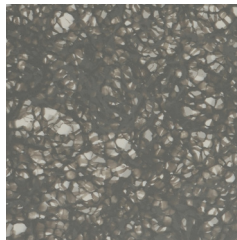
42) Translucent Glitter Green
PS2119



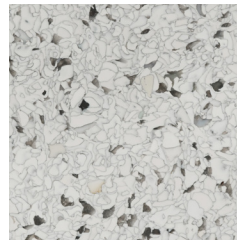
43) Coral Reef
PS1501



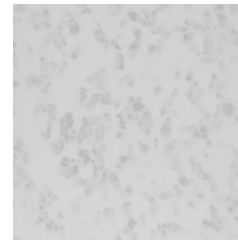
44) Pebble (Gensler)
PS1906



45) Pumice
PS2405



46) Oyster (Gensler)
PS2701



47) Frost (Gensler)
PS2603

Technical Specifications

Introduction

Polygood® stands as a remarkable achievement in sustainable surface materials. It's a Cradle to Cradle Certified® Bronze material, reflecting unwavering commitment to environmental responsibility.

Made entirely from 100% recycled and recyclable plastic, Polygood® panels are the only large-scale sustainable product of their kind. Each panel's composition consists of a single type of recycled plastic, ensuring both simple recycling and robust, long-lasting quality. The patterns derive from an array of postconsumer and post-industrial plastic waste sources, including items like refrigerators, singleuse cutlery, household appliances, and manufacturing components.

Product composition	<p>Polygood has chosen recycled plastic as its sole material due to the company's commitment to reducing waste and contributing to the circular economy.</p> <p>This recycled plastic is sourced from EuCertPlast-certified suppliers specializing in recycling polystyrene derived from electronic and Waste from Electrical and Electronic Equipment (WEEE), as well as post-consumer and post-industrial waste sources. Recycled polystyrene (rPS), which forms the entire composition of Polygood® panels, was selected due to its lower energy demand compared to other polymers during the production process, thereby reducing environmental impact.</p>
---------------------	---

Specifications	Dimensions	2800 x 1400 (mm)
	Thickness	12 / 19 (mm)
	Thickness tolerance	+/- 0.5 (mm)
	Panel weight	50-78 kg (110-172 lbs)
	Finish	Standard finishes include semi-matte, single-faced. Finishes available on request include semi-gloss, high-gloss, and double-faced. Optional coatings can provide scratch or fire resistance.

Workability

Cuts	Trim the panels into that perfect square, oval, half moon, hexagon, stair-case, or remove parts for inlays and tongue and groove fitting.
Curves	Flexible when heated, thermoform the panels into many forms for perfectly rounded edges, contours, bends, or twists.
Grooves	Etch intriguing, tactile designs onto the surface that are touchable, geometric, wavy, lined — engraved with 3D creativity.
Cut-outs	A CNC machining programme can route repeatable patterns, vectors, multidimensional textures, and bendable grids.
Joining	Counterbore drilling or pocket joinery makes for easy assembly with or without the use of glue.
Edges	Finish the trim with traditional bullnose, bevel, and ogee edges, or give it an angle for joining and striking motifs.