



**Amorim Wise Cork Inspire 700**

Surfaces Collection

Amorim Wise Flooring is PVC-free, featuring an innovative core that incorporates both cork and recycled cork waste in the manufacturing process, making it climate positive

Apart from the additional features of walking comfort and impact resistance, it contributes to improved indoor air quality and is easy to maintain. Amorim Wise Flooring is suitable to be installed in both commercial and residential spaces.

Thickness  
Dimensions

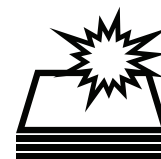
7 mm  
1225 × 190 mm (1.862m<sup>2</sup>)  
One pack consists of 8 pieces

Characteristics



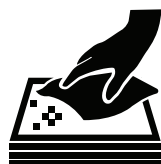
**Water-resistant**

Non-PVC cork rigid core makes the surface ideal for use in areas prone to moisture.



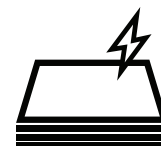
**Impact Resistant**

High shock absorption makes cork resilient to damage from impact.



**Easy to Clean**

Regular mopping with mild floor cleaners helps maintain the cork flooring.



**Energy Efficient**

Cork is a natural thermal insulator which optimises floor temperature all year round.



**Sound Absorption**

Reduces walking sounds up to 53% for a quieter environment.



**Sustainable**

Harvested and made from the bark of cork oak, the tree itself is left intact.

# PANELOGUE

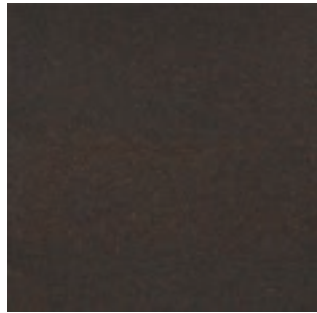
# Technical Datasheet

Finishes  
Ex-Stock



80000089  
Originals Shell

Finishes  
Indent



80000078  
Identity Nightshade



80000087  
Shell Jasmim



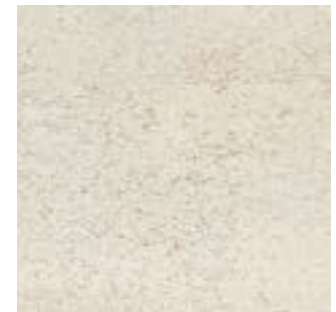
80000088  
Shell Marfim



80000096  
Fashionable Cement



80000097  
Fashionable Grafite



80000079  
Identity Moonlight



80000094  
Lane Antique White



80000090  
Originals Harmony



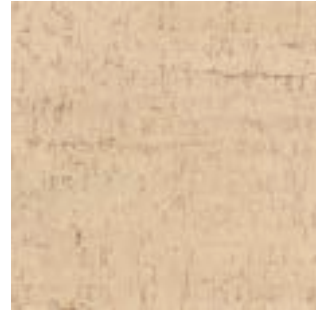
80000091  
Originals Rhapsody

# PANELOGUE

# Technical Datasheet



80000084  
Traces Jasmim



80000085  
Traces Marfim



80000086  
Traces Natural



80000082  
Traces Spice

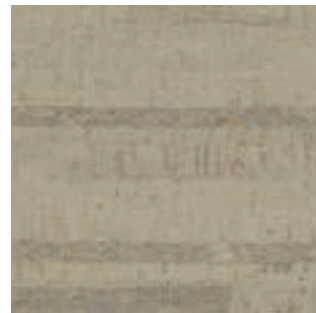


80000081  
Traces Tea

Finishes  
Indent  
(MOQ 270m<sup>2</sup>)



80000080  
Identity Chestnut



80000092  
Lane Antracite

## Technical Specifications

### General Properties EN 16511

Properties	Standard	Unit	Result
Thickness	ISO 24337	mm	nominal +- 0.25
Length		mm	nominal value 1225
Width		mm	nominal value 190
Squareness, q		qmax (mm)	≤ 0.20
Straightness, s		smax (mm/m)	≤ 0.30
Openings		mm	≤ 0.20
Height difference		mm	≤ 0.15
Flatness of the panel (length)		%	concave ≤ 0.50 / convex ≤ 1.00
Flatness of the panel (width)		%	concave ≤ 0.15 / convex ≤ 0.20

### Classification Properties EN 16511

Properties	Standard	Unit	Result
Wear resistance IP	EN 15468, procedure B	cycles	≥ 5000
Impact resistance (large diameter ball)	EN 13329:2006+ A1:2008, Annex F	mm	≥ 1600
Castor chair resistance	EN 425	Visual effect 25,000 cycles	No visible change / damages
Resistance to staining	EN 438-2	Group 1 and 2 - grade 5	Complies
		Group 3 - grade 4	Complies
Residual indentation	EN ISO 24343-1	mm	≤ 0.2
Swelling	ISO 24336	%	< 1
Dimensional stability due to variation of temperature	EN ISO 23999	%	≤ 0.25
Effect of furniture leg	EN 424	-	No visible change / damages

### Safety Properties EN 14041

Properties	Standard	Unit	Result
Fire Resistance	EN 13501-1	Class	Cfl-S1
Slip Classification	EN 13893	Class	DS
Formaldehyde Emission	EN 717-1	Class	E1
Content pentachlorophenol (PCP)	EN 12673	% mg/kg	Undetectable

### Additional Properties

Properties	Standard	Unit	Result
Impact sound reduction	EN ISO 10140	dB ( $\Delta L_w$ )	18
Walking noise	IHD-W431	dB	Reduction improvement 18.5 dB
		%	Difference of loudness 65%
Thermal conductivity	EN 12667	w/(mK)	0.111
Thermal resistance	EN 12667 / ISO 1957	(m <sup>2</sup> K)/W	0.06

### ASTM Standards

Properties	Standard	Unit	Result
Airborne sound transmission loss	ASTM E90 / ASTM E413	STC (dB)	60
Impact sound transmission	ASTM E492 / ASTM E989	IIC (dB)	65
Impact sound transmission	ASTM E2179	$\Delta$ IIC	-
Smoke density	ASTM 662	KW/m <sup>2</sup>	-
Radiant panel (critical radiant flux)	ASTM E648	(W/cm <sup>2</sup> )	-
Thermal resistance	ASTM C177	R-value (m <sup>2</sup> K)/W	0.0539
Thermal conductivity	ASTM C177	$\lambda$ -value W/(m.K)	0.127
Residual indentation	ASTM F1914	%	0.9
Static load limit	ASTM F970	in or mm	0.100
Ignition characteristics of finished textile floor covering systems	ASTM D2859	-	-