



Amorim Wise Dekwall

Surfaces Collection

Amorim Wise Dekwall wall coverings are made entirely of cork, comprising two layers of 100% natural and renewable raw material – a thick core layer made of agglomerated cork as a backing and a thin sheet of genuine cork veneer for its decorative design. Each panel is coated with a protective finishing for added durability.

Thickness

3 mm

Dimensions

300 × 600 mm

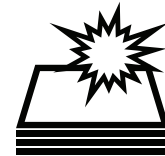
One box consists of 33 pieces (5.94m²)

Characteristics



Sustainable

Harvested and made from the bark of cork oak, the tree itself is left intact.



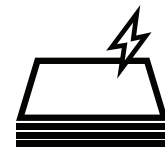
Impact Resistant

High shock absorption makes cork resilient to damage from impact.



Sound Absorption

Cork reduces noise transmission within rooms for a quieter environment.



Energy Efficient

A natural thermal insulator, cork also helps stabilise the temperature in a room.

PANELOGUE

Technical Datasheet

Finishes
Ex-Stock



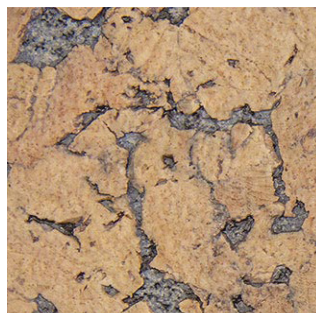
81000106
Stone Art Platinum



81000061
Fiord Exclusive Waxed



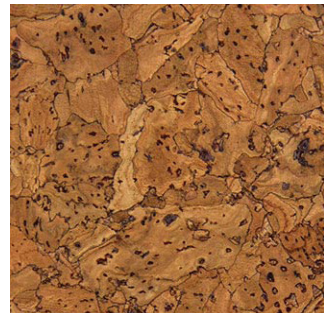
81000062
Hawai Black Pearl Waxed



81000063
Hawai Black Oyster Waxed



81000071
Melville Waxed

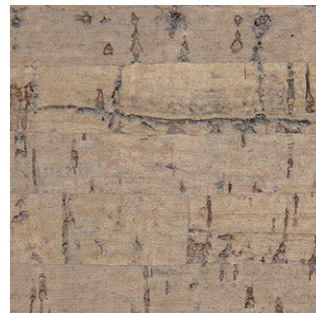


81000080
Cayman Waxed

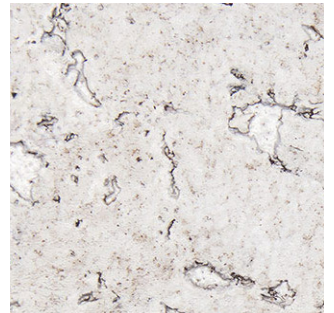
Finishes
Indent Order



81000074
Bali Waxed



81000004
Bamboo Artica Varnished



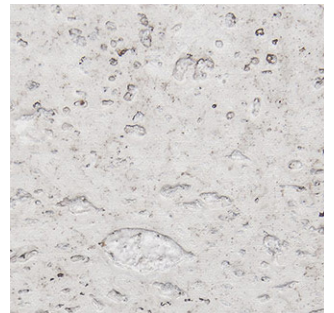
81000087
Hawai Exclusive Waxed



81000057
Hawai Natural Waxed



81000058
Fiord Natural Waxed



81000001
Malta Moonlight Waxed

PANELOGUE

Technical Datasheet

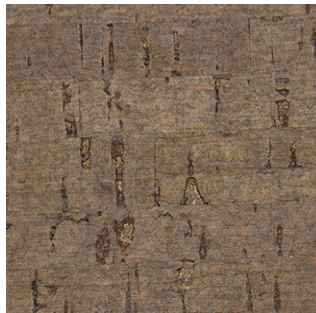


81000102
Stone Art Oyster



81000104
Stone Art Pearl

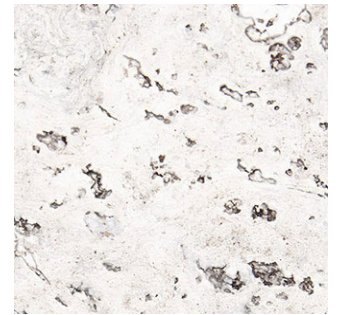
Require MOQ
size: 100m²



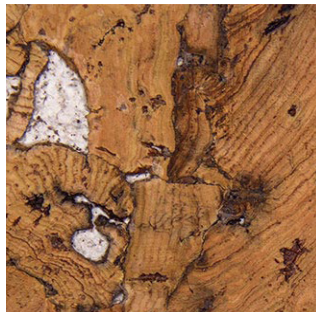
81000094
Bamboo Terra Varnished



81000095
Bamboo Toscana Varnished



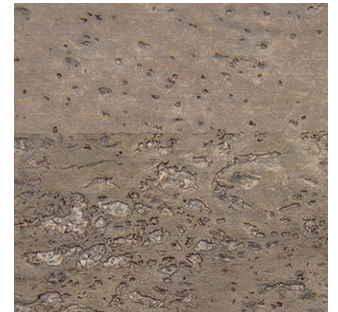
81000056
Flores White Waxed



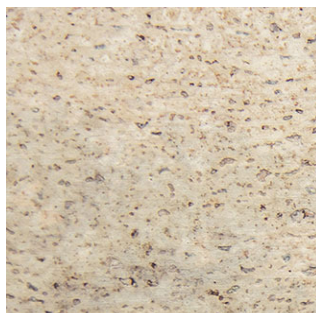
81000088
Hawaii White Waxed



81000000
Fiord White Waxed



81000065
Malta Platinum Waxed



81000067
Malta Champagne Waxed

Technical Specifications

Properties	Standard	Unit	Result
Thickness	ISO 7322	mm	3.0 ± 0.3%
Squareness	EN 427	mm	600: < 1.0 mm 300: < 0.5 mm
Density	EN 672	Kg/m ³	200
Dimension Stability	EN 434	%	3.0 ± 0.3%
Curling	EN 434	mm	≤ 6
Moisture Content	EN 12105	%	≤ 7
Emission	EN 12149 Method C	Class	E1: Low formaldehyde emission
		mg/kg	≤ 95
Vinyl Chloride Monomer (VCM)	EN 12149 Test B	mg/kg	≤ 0.2
Thermal Resistance	EN 12667	m ² K/W	0.0583(Waxed) 0.0572 (Varnished)
Sound Absorption	ISO 354	α _w	0.10
Reaction of Heavy Metals and Specific Elements	EN 12149		Fulfilled