



Amorim Wise Cork Inspire 700

Surfaces Collection

Amorim Wise Flooring is PVC-free, featuring an innovative core that incorporates both cork and recycled cork waste in the manufacturing process, making it climate positive

Apart from the additional features of walking comfort and impact resistance, it contributes to improved indoor air quality and is easy to maintain. Amorim Wise Flooring is suitable to be installed in both commercial and residential spaces.

Thickness

7 mm

Dimensions

1225 × 190 mm (1.862m²)

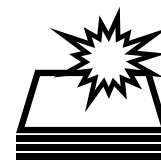
One pack consists of 8 pieces

Characteristics



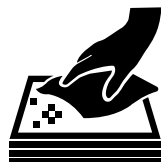
Water-resistant

Non-PVC cork rigid core makes the surface ideal for use in areas prone to moisture.



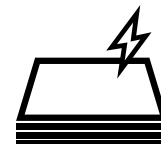
Impact Resistant

High shock absorption makes cork resilient to damage from impact.



Easy to Clean

Regular mopping with mild floor cleaners helps maintain the cork flooring.



Energy Efficient

Cork is a natural thermal insulator which optimises floor temperature all year round.



Sound Absorption

Reduces walking sounds up to 53% for a quieter environment.



Sustainable

Harvested and made from the bark of cork oak, the tree itself is left intact.

PANELOGUE

Technical Datasheet

Finishes
Ex-Stock



8000089
Originals Shell

Finishes
Indent



8000078
Identity Nightshade



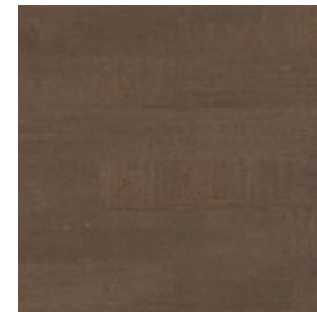
8000087
Shell Jasmim



8000088
Shell Marfim



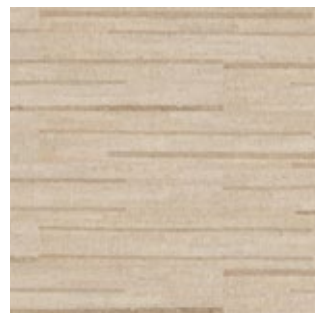
8000096
Fashionable Cement



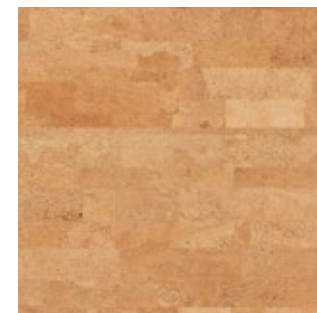
8000097
Fashionable Grafite



8000079
Identity Moonlight



8000094
Lane Antique White



8000090
Originals Harmony



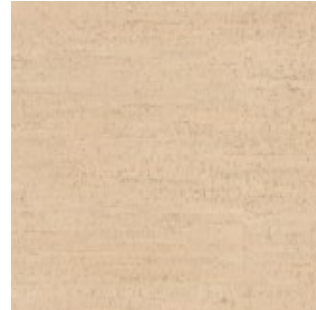
8000091
Originals Rhapsody

PANELOGUE

Technical Datasheet



80000084
Traces Jasmim



80000085
Traces Marfim



80000086
Traces Natural

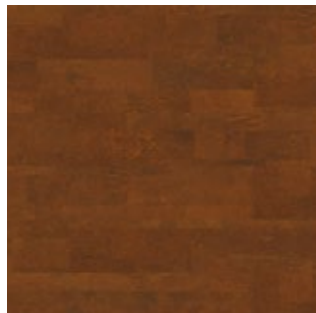


80000082
Traces Spice

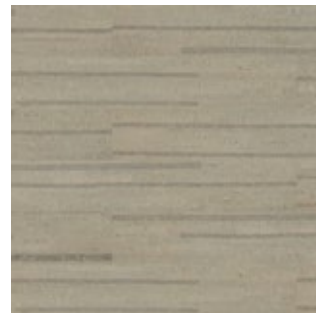


80000081
Traces Tea

Finishes
Indent
(MOQ 270m²)



80000080
Identity Chestnut



80000092
Lane Antracite

Technical Specifications

General Properties EN 16511

Properties	Standard	Unit	Result
Thickness	ISO 24337	mm	nominal +- 0.25
Length		mm	nominal value 1225
Width		mm	nominal value 190
Squareness, q		qmax (mm)	≤ 0.20
Straightness, s		smax (mm/m)	≤ 0.30
Openings		mm	≤ 0.20
Height difference		mm	≤ 0.15
Flatness of the panel (length)		%	concave ≤ 0.50 / convex ≤ 1.00
Flatness of the panel (width)		%	concave ≤ 0.15 / convex ≤ 0.20

Classification Properties EN 16511

Properties	Standard	Unit	Result
Wear resistance IP	EN 15468, procedure B	cycles	≥ 5000
Impact resistance (large diameter ball)	EN 13329:2006+ A1:2008, Annex F	mm	≥ 1600
Castor chair resistance	EN 425	Visual effect 25,000 cycles	No visible change / damages
Resistance to staining	EN 438-2	Group 1 and 2 - grade 5	Complies
		Group 3 - grade 4	Complies
Residual indentation	EN ISO 24343-1	mm	≤ 0.2
Swelling	ISO 24336	%	< 1
Dimensional stability due to variation of temperature	EN ISO 23999	%	≤ 0.25
Effect of furniture leg	EN 424	-	No visible change / damages

Safety Properties EN 14041

Properties	Standard	Unit	Result
Fire Resistance	EN 13501-1	Class	Cfl-S1
Slip Classification	EN 13893	Class	DS
Formaldehyde Emission	EN 717-1	Class	E1
Content pentachlorophenol (PCP)	EN 12673	% mg/kg	Undetectable

Additional Properties

Properties	Standard	Unit	Result
Impact sound reduction	EN ISO 10140	dB (ΔL_w)	18
Walking noise	IHD-W431	dB	Reduction improvement 18.5 dB
		%	Difference of loudness 65%
Thermal conductivity	EN 12667	w/(mK)	0.111
Thermal resistance	EN 12667 / ISO 1957	(m ² K)/W	0.06

ASTM Standards

Properties	Standard	Unit	Result
Airborne sound transmission loss	ASTM E90 / ASTM E413	STC (dB)	60
Impact sound transmission	ASTM E492 / ASTM E989	IIC (dB)	65
Impact sound transmission	ASTM E2179	Δ IIC	-
Smoke density	ASTM 662	KW/m ²	-
Radiant panel (critical radiant flux)	ASTM E648	(W/cm ²)	-
Thermal resistance	ASTM C177	R-value (m ² K)/W	0.0539
Thermal conductivity	ASTM C177	λ -value W/(m.K)	0.127
Residual indentation	ASTM F1914	%	0.9
Static load limit	ASTM F970	in or mm	0.100
Ignition characteristics of finished textile floor covering systems	ASTM D2859	-	-